

A SAMPLE ARTICLE WITH SOME ADDITIONAL NOTE*

BY FIRST AUTHOR ¹, SECOND AUTHOR ^{2,*} \AND THIRD AUTHOR ^{2,†}

¹Department, University or Company Name, *first@somewhere.com*

²Department, University or Company Name, * *second@somewhere.com*; † *third@somewhere.com*

The abstract should summarize the contents of the paper. It should be clear, descriptive, self-explanatory and not longer than 200 words. It should also be suitable for publication in abstracting services. Formulas should be used as sparingly as possible within the abstract. The abstract should not make reference to results, bibliography or formulas in the body of the paper—it should be self-contained.

This is a sample input file. Comparing it with the output it generates can show you how to produce a simple document of your own.

1. Introduction. This template helps you to create a properly formatted $\LaTeX 2_{\epsilon}$ manuscript. Prepare your paper in the same style as used in this sample .pdf file. Try to avoid excessive use of italics and bold face. Please do not use any $\LaTeX 2_{\epsilon}$ or \TeX commands that affect the layout or formatting of your document (i.e., commands like `\textheight`, `\textwidth`, etc.).

2. Section headings. Here are some sub-sections:

2.1. *A sub-section.* Regular text.

2.1.1. *A sub-sub-section.* Regular text.

3. Text.

3.1. *Lists.* The following is an example of an *itemized* list, two levels deep.

- This is the first item of an itemized list. Each item in the list is marked with a “tick.” The document style determines what kind of tick mark is used.
- This is the second item of the list. It contains another list nested inside it.
 - This is the first item of an itemized list that is nested within the itemized list.
 - This is the second item of the inner list. \LaTeX allows you to nest lists deeper than you really should.
- This is the third item of the list.

The following is an example of an *enumerated* list of one level.

- (i) This is the first item of an enumerated list.
- (ii) This is the second item of an enumerated list.

The following is an example of an *enumerated* list, two levels deep.

1. This is the first item of an enumerated list. Each item in the list is marked with a “tick.” The document style determines what kind of tick mark is used.

*A sample additional note to the title.

Keywords and phrases: First keyword, Second keyword.

2. This is the second item of the list. It contains another list nested inside of it.
 - (i) This is the first item of an enumerated list that is nested within.
 - (ii) This is the second item of the inner list. \LaTeX allows you to nest lists deeper than you really should.

This is the rest of the second item of the outer list.

3. This is the third item of the list.

ird item of the list. `\end{longlist}`

3.2. *Punctuation.* Dashes come in three sizes: a hyphen, an intra-word dash like “*U*-statistics” or “the time-homogeneous model”; a medium dash (also called an “en-dash”) for number ranges or between two equal entities like “1–2” or “Cauchy–Schwarz inequality”; and a punctuation dash (also called an “em-dash”) in place of a comma, semicolon, colon or parentheses—like this.

Generating an ellipsis ... with the right spacing around the periods requires a special command.

3.3. *Citation.* Simple author and year cite: Billingsley (1999). Multiple bibliography items cite: Billingsley (1999); Bourbaki (1966) or (Billingsley, 1999; Bourbaki, 1966). Author only cite: Ethier and Kurtz. Year only cite: 1956 or (1956).

4. Fonts. Please use text fonts in text mode, e.g.:

Roman

Italic

Bold

SMALL CAPS

Sans serif

Typewriter

Please use mathematical fonts in mathematical mode, e.g.:

ABCabc123

ABCabc123

ABCabc123

ABCabc123 $\alpha\beta\gamma$

ABC

$\mathbb{A}\mathbb{B}\mathbb{C}$

ABCabc123

ABCabc123

$\mathfrak{A}\mathfrak{B}\mathfrak{C}\mathfrak{a}\mathfrak{b}\mathfrak{c}\mathfrak{1}\mathfrak{2}\mathfrak{3}$

Note that `\mathcal`, `\mathbb` belongs to capital letters-only font typefaces.

5. Notes. Footnotes¹ pose no problem.²

¹This is an example of a footnote.

²Note that footnote number is after punctuation.

6. Quotations. Text is displayed by indenting it from the left margin. There are short quotations

This is a short quotation. It consists of a single paragraph of text. There is no paragraph indentation. and longer ones.

This is a longer quotation. It consists of two paragraphs of text. The beginning of each paragraph is indicated by an extra indentation.

This is the second paragraph of the quotation. It is just as dull as the first paragraph.

7. Environments.

7.1. *Examples for plain-style environments.*

AXIOM 1. *This is the body of Axiom 1.*

PROOF. This is the body of the proof of the axiom above. □

CLAIM 2. *This is the body of Claim 2. Claim 2 is numbered after Axiom 1 because we used [axiom] in \newtheorem.*

THEOREM 7.1. *This is the body of Theorem 7.1. Theorem 7.1 numbering is dependent on section because we used [section] after \newtheorem.*

THEOREM 7.2 (Title of the theorem). *This is the body of Theorem 7.2. Theorem 7.2 has additional title.*

LEMMA 7.3. *This is the body of Lemma 7.3. Lemma 7.3 is numbered after Theorem 7.2 because we used [theorem] in \newtheorem.*

PROOF OF LEMMA 7.3. This is the body of the proof of Lemma 7.3. □

7.2. *Examples for remark-style environments.*

DEFINITION 7.4. This is the body of Definition 7.4. Definition 7.4 is numbered after Lemma 7.3 because we used [theorem] in \newtheorem.

EXAMPLE. This is the body of the example. Example is unnumbered because we used \newtheorem* instead of \newtheorem.

FACT. This is the body of the fact. Fact is unnumbered because we used \newtheorem* instead of \newtheorem.

8. Tables and figures. Cross-references to labeled tables: As you can see in Table 1 and also in Table 2.

Sample of cross-reference to figure. Figure 1 shows that it is not easy to get something on paper.

TABLE 1
Table caption

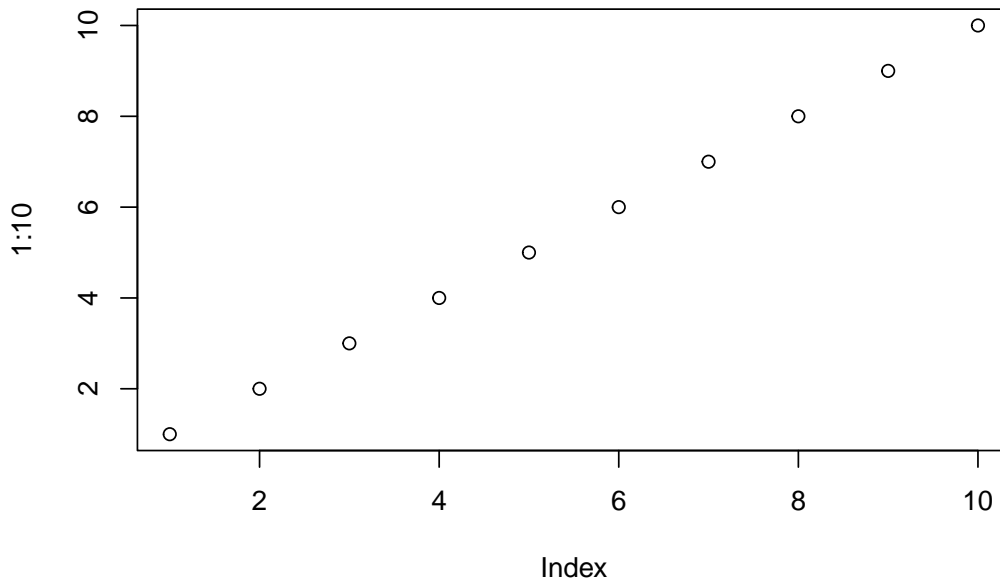
	mpg	cyl	disp	hp	drat	wt	qsec	vs	am	gear	carb
Mazda RX4	21.0	6	160.0	110	3.90	2.620	16.46	0	1	4	4
Mazda RX4 Wag	21.0	6	160.0	110	3.90	2.875	17.02	0	1	4	4
Datsun 710	22.8	4	108.0	93	3.85	2.320	18.61	1	1	4	1
Hornet 4 Drive	21.4	6	258.0	110	3.08	3.215	19.44	1	0	3	1
Hornet Sportabout	18.7	8	360.0	175	3.15	3.440	17.02	0	0	3	2
Valiant	18.1	6	225.0	105	2.76	3.460	20.22	1	0	3	1
Duster 360	14.3	8	360.0	245	3.21	3.570	15.84	0	0	3	4
Merc 240D	24.4	4	146.7	62	3.69	3.190	20.00	1	0	4	2
Merc 230	22.8	4	140.8	95	3.92	3.150	22.90	1	0	4	2
Merc 280	19.2	6	167.6	123	3.92	3.440	18.30	1	0	4	4
Merc 280C	17.8	6	167.6	123	3.92	3.440	18.90	1	0	4	4
Merc 450SE	16.4	8	275.8	180	3.07	4.070	17.40	0	0	3	3
Merc 450SL	17.3	8	275.8	180	3.07	3.730	17.60	0	0	3	3
Merc 450SLC	15.2	8	275.8	180	3.07	3.780	18.00	0	0	3	3
Cadillac Fleetwood	10.4	8	472.0	205	2.93	5.250	17.98	0	0	3	4
Lincoln Continental	10.4	8	460.0	215	3.00	5.424	17.82	0	0	3	4
Chrysler Imperial	14.7	8	440.0	230	3.23	5.345	17.42	0	0	3	4
Fiat 128	32.4	4	78.7	66	4.08	2.200	19.47	1	1	4	1
Honda Civic	30.4	4	75.7	52	4.93	1.615	18.52	1	1	4	2
Toyota Corolla	33.9	4	71.1	65	4.22	1.835	19.90	1	1	4	1
Toyota Corona	21.5	4	120.1	97	3.70	2.465	20.01	1	0	3	1
Dodge Challenger	15.5	8	318.0	150	2.76	3.520	16.87	0	0	3	2
AMC Javelin	15.2	8	304.0	150	3.15	3.435	17.30	0	0	3	2
Camaro Z28	13.3	8	350.0	245	3.73	3.840	15.41	0	0	3	4
Pontiac Firebird	19.2	8	400.0	175	3.08	3.845	17.05	0	0	3	2
Fiat X1-9	27.3	4	79.0	66	4.08	1.935	18.90	1	1	4	1
Porsche 914-2	26.0	4	120.3	91	4.43	2.140	16.70	0	1	5	2
Lotus Europa	30.4	4	95.1	113	3.77	1.513	16.90	1	1	5	2
Ford Pantera L	15.8	8	351.0	264	4.22	3.170	14.50	0	1	5	4
Ferrari Dino	19.7	6	145.0	175	3.62	2.770	15.50	0	1	5	6
Maserati Bora	15.0	8	301.0	335	3.54	3.570	14.60	0	1	5	8
Volvo 142E	21.4	4	121.0	109	4.11	2.780	18.60	1	1	4	2

TABLE 2
Sample posterior estimates for each model

Model	Parameter	Mean	Std. dev.	Quantile		
				2.5%	50%	97.5%
Model 0	β_0	-12.29	2.29	-18.04	-11.99	-8.56
	β_1	0.10	0.07	-0.05	0.10	0.26
	β_2	0.01	0.09	-0.22	0.02	0.16
Model 1	β_0	-4.58	3.04	-11.00	-4.44	1.06
	β_1	0.79	0.21	0.38	0.78	1.20
	β_2	-0.28	0.10	-0.48	-0.28	-0.07
Model 2	β_0	-11.85	2.24	-17.34	-11.60	-7.85
	β_1	0.73	0.21	0.32	0.73	1.16
	β_2	-0.60	0.14	-0.88	-0.60	-0.34
	β_3	0.22	0.17	-0.10	0.22	0.55

9. Equations and the like. Two equations:

$$(9.1) \quad C_s = K_M \frac{\mu/\mu_x}{1 - \mu/\mu_x}$$

FIGURE 1. *Figure caption*

and

$$(9.2) \quad G = \frac{P_{\text{opt}} - P_{\text{ref}}}{P_{\text{ref}}} 100(\%).$$

Equation arrays:

$$(9.3) \quad \frac{dS}{dt} = -\sigma X + s_F F,$$

$$(9.4) \quad \frac{dX}{dt} = \mu X,$$

$$(9.5) \quad \frac{dP}{dt} = \pi X - k_h P,$$

$$(9.6) \quad \frac{dV}{dt} = F.$$

One long equation:

$$(9.7) \quad \begin{aligned} \mu_{\text{normal}} &= \mu_x \frac{C_s}{K_x C_x + C_s} \\ &= \mu_{\text{normal}} - Y_{x/s} (1 - H(C_s)) (m_s + \pi/Y_{p/s}) \\ &= \mu_{\text{normal}}/Y_{x/s} + H(C_s) (m_s + \pi/Y_{p/s}). \end{aligned}$$

APPENDIX: TITLE

Appendices should be provided in {appendix} environment, before Acknowledgements.

If there is only one appendix, then please refer to it in text as ... in the [Appendix](#).

APPENDIX A: TITLE OF THE FIRST APPENDIX

If there are more than one appendix, then please refer to it as . . . in Appendix [A](#), Appendix [B](#), etc.

APPENDIX B: TITLE OF THE SECOND APPENDIX

B.1. First subsection of Appendix B. Use the standard L^AT_EX commands for headings in `{appendix}`. Headings and other objects will be numbered automatically.

$$(B.1) \quad \mathcal{P} = (j_{k,1}, j_{k,2}, \dots, j_{k,m(k)}).$$

Sample of cross-reference to the formula (B.1) in Appendix [B](#).

Acknowledgements. The authors would like to thank the anonymous referees, an Associate Editor and the Editor for their constructive comments that improved the quality of this paper.

The first author was supported by NSF Grant DMS-??-?????.

The second author was supported in part by NIH Grant ??????????.

SUPPLEMENTARY MATERIAL

Title of Supplement A

Short description of Supplement A.

Title of Supplement B

Short description of Supplement B.

REFERENCES

- BILLINGSLEY, P. (1999). *Convergence of Probability Measures*, 2nd ed. ed. John Wiley & Sons.
- BOURBAKI, N. (1966). *General Topology* **1**. Addison–Wesley, Reading, MA.
- ETHIER, S. N. and KURTZ, T. G. (1985). *Markov Processes: Characterization and Convergence*. Wiley, New York.
- PROKHOROV, Y. V. (1956). Convergence of random processes and limit theorems in probability theory. *Theory of Probability & Its Applications* **1** 157–214.